



Digital Transformation & Accessibility

SangBeom Ham
Corporate Standards Group
Microsoft corporation

A Story about Transformation

An aerial photograph of the Ford River Rouge Complex, showing a large industrial facility with numerous buildings, parking lots, and a river in the foreground. The image is in black and white, with a semi-transparent circular overlay on the right side containing text.

The Ford River Rouge Complex

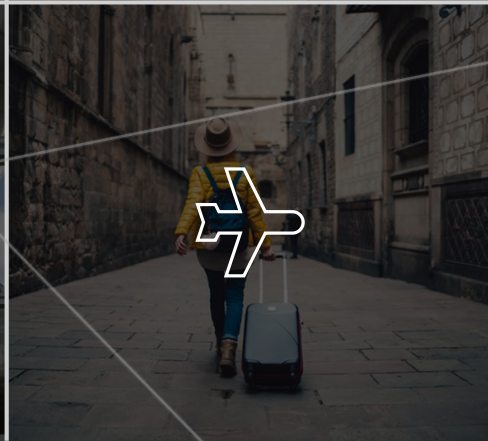
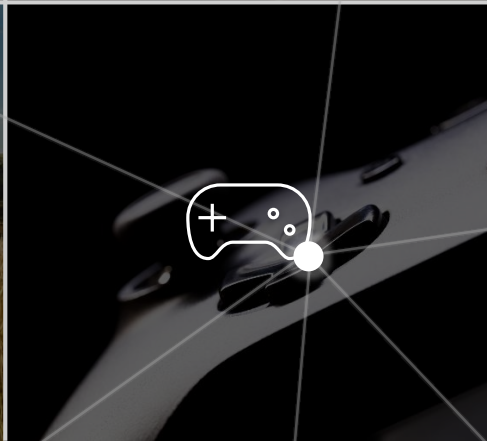
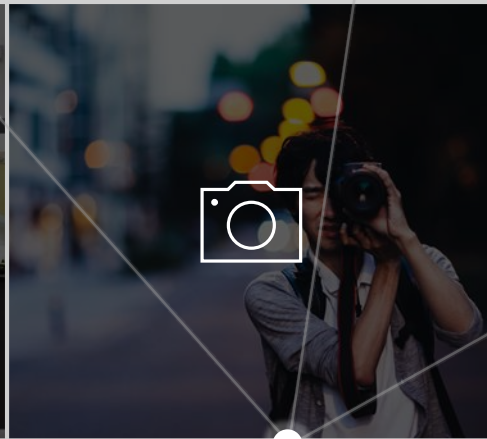
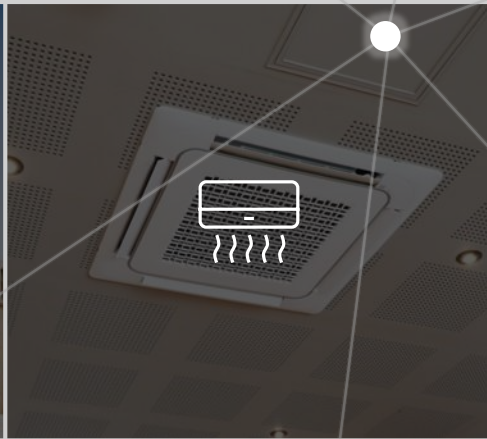
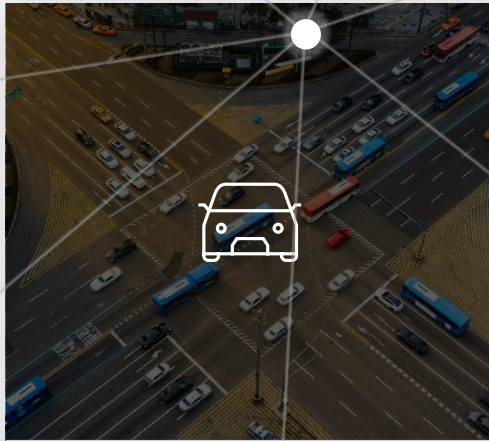
1.5 miles (2.4 km) wide by 1 mile (1.6 km) long, including 93 buildings with nearly 16 million square feet (1.5 km²) of factory floor space.



A Prime
example
of vertical
integration









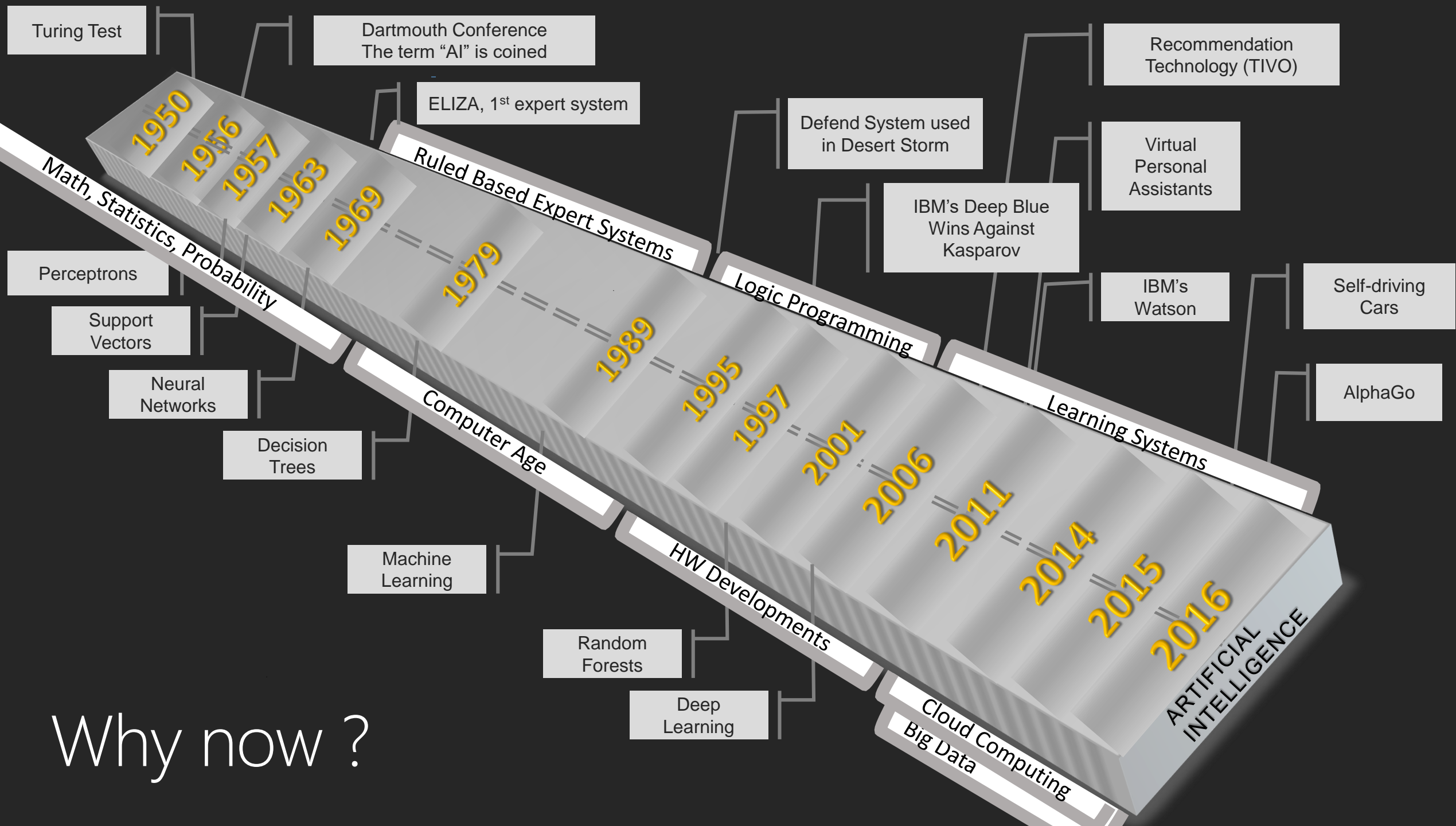
NETFLIX

amazon.com[®]



The background is a dark blue gradient. It features several stylized cloud shapes. Some clouds are composed of concentric dotted circles, while others are solid dark blue. Numerous vertical arrows of varying heights and colors (light blue, dark blue, and pink) point upwards across the image. A large, stylized cloud shape at the bottom is outlined in a light grey or white color.

Cloud Computing & Artificial Intelligence





[놀란 얼굴의 턱수염이 난 40대 남자입니다.]



Inclusive

Human Centered Design











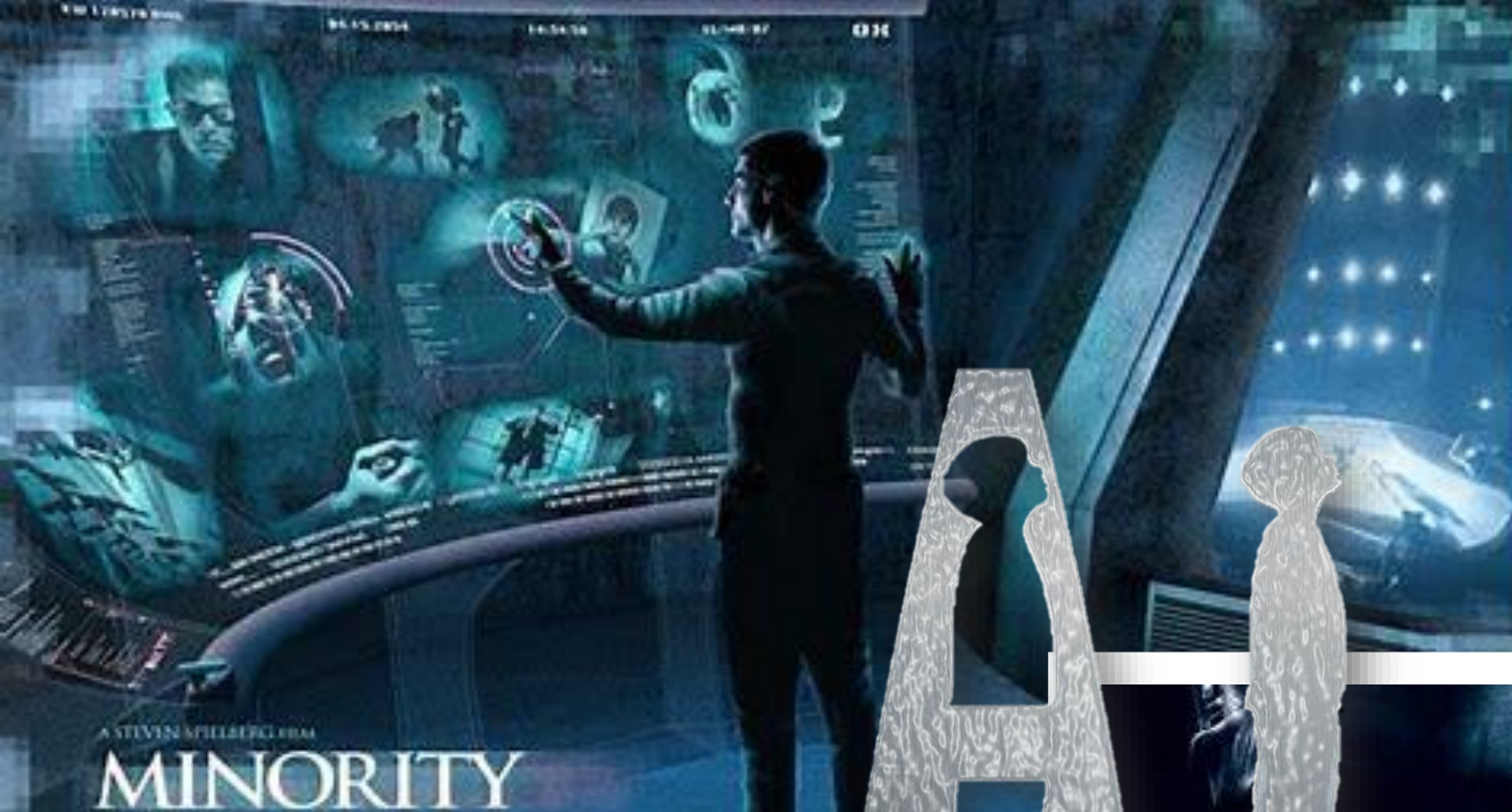
EXCLUSIVE

abc

INVESTIGATION FOCUSED ON TESLA AUTOPILOT

abc ACTION NEWS

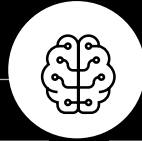
11:02 83°





"With artificial intelligence we are summoning the demon."
"Vastly more risk than North Korea" - Elon Musk 2017

Design AI to Earn Trust



Fairness



Reliability
& Safety



Privacy &
Security



Inclusiveness



Transparency



Accountability

In it for the long game

From accessibility to inclusion



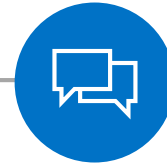
We are committed to inclusion – in who we are,
who we serve and every product we create.



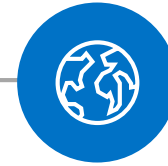
Culture



Accessible and
accountable



Inclusive
interactions



Investing
in the future

Thank you.